



# REQ Capital Global Compounder Strategy

*Historic Track Record since 2010*



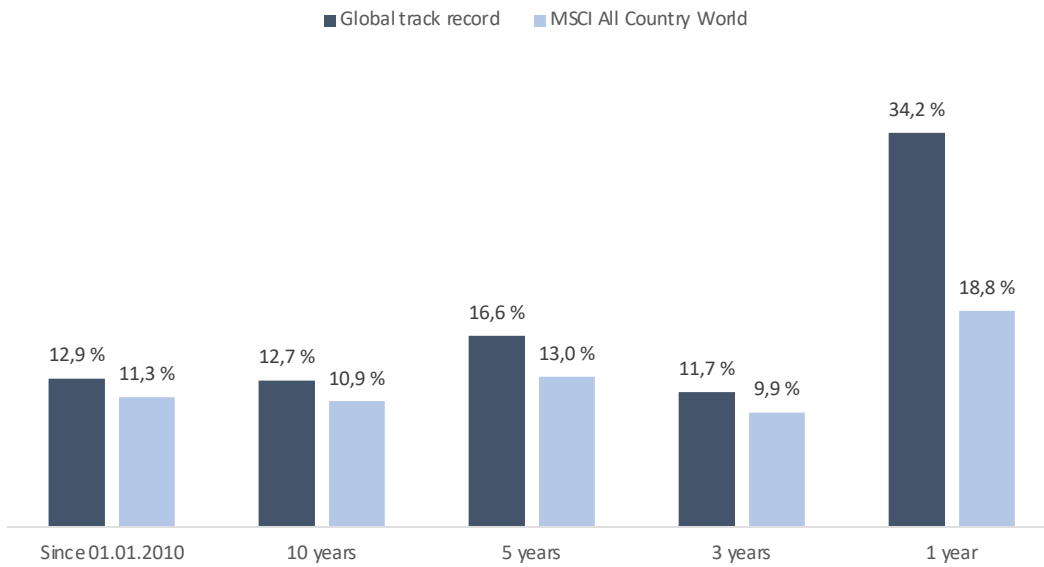
# Global track record (EUR)

Historical figures

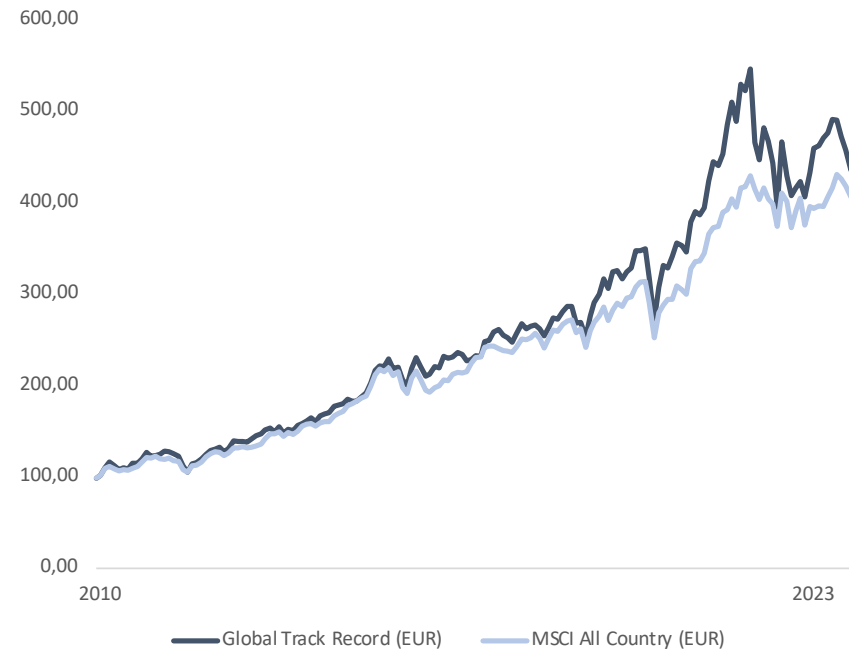


April 2020:  
Rated as fund with best risk-adjusted returns of 230 global funds in the Nordics over last 1,3 and 5 years.

## Annualized returns



## Historical performance (indexed)



\*Global Track Record 01.01.2010 – 15.06.2021. REQ Global Compounders 15.06.2021 – 29.12.2023. All figures in EUR. Index: MSCI All Country Total Return. Gross returns

# Global track record (NOK)

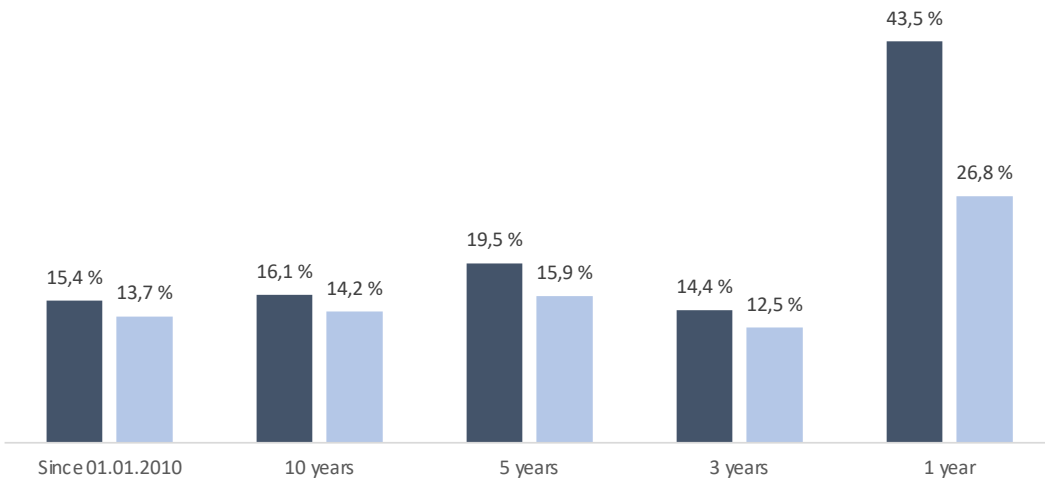
Historical figures



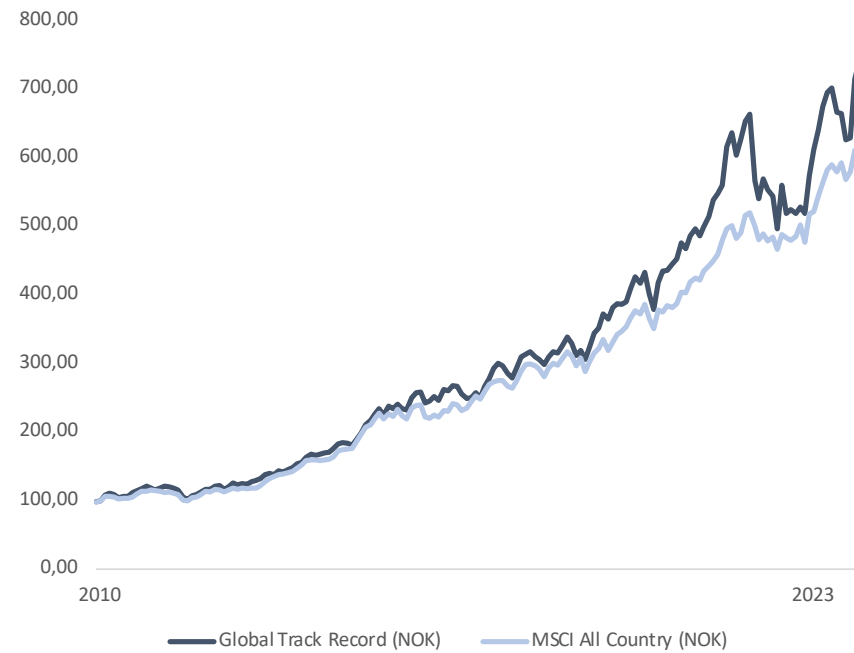
April 2020:  
Rated as fund with best risk-adjusted returns of 230 global funds in the Nordics over last 1,3 and 5 years.

## Annualized returns

■ Global track record ■ MSCI All Country World



## Historical performance (indexed)



\*Global Track Record 01.01.2010 – 15.06.2021. REQ Global Compounders 15.06.2021 – 29.12.2023. All figures in NOK. Index: MSCI All Country Total Return. Gross returns



# Disclaimer

---

## **Important Notice**

This presentation has been prepared by REQ Capital AS ("REQ") authorized and regulated by the Norwegian Financial Services Authority ("FSA"). The Information is intended solely for sophisticated investors who are professional clients or eligible counterparties under the rules of the FSA.

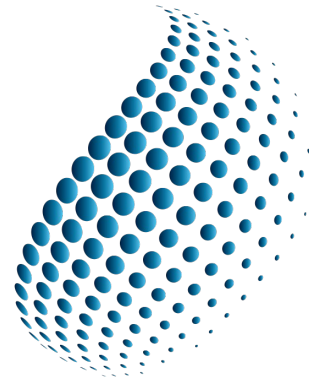
The summary description included herein, and any other materials provided to the specific recipient are intended only for information purposes and convenient reference and are not intended to be complete or act as an offer or solicitation with respect to the purchase or sale of any security. This information is not intended to provide and should not be relied upon for accounting, legal or tax advice or investment recommendations. You should consult your tax, legal, accounting or other advisors about the issues discussed herein. Material terms of the fund may be subject to change. Any prospective investor will be provided with a copy of the fund's prospectus supplement and KIID in each case with supporting subscriptions documents, and an opportunity to review these documents and other agreements relating to the offering (individually and together, the "Offering Documents"). Prospective investors should review the Offering Documents, including the risk factors in the prospectus and KIID, as the case may be, before making a decision to invest. In addition, prospective investors should rely only on the fund's Offering Documents in making a decision to invest, although certain descriptions contained herein may be more detailed than those contained in the Offering Documents. Any subscription may only be made on the terms of the Offering Documents and subject to completion of a detailed application form.

## **Investment Risks**

There can be no assurance that the proposed fund will achieve its investment objective. It should be appreciated that the value of shares may go down as well as up. An investment in a fund involves investment risks, including possible loss of the amount invested. Any investment in a fund should be regarded as a long-term investment. The capital return and income of a fund are based on the capital appreciation and income on the investments it holds, less expenses incurred. Therefore, a fund's return may be expected to fluctuate in response to changes in such capital appreciation or income.

The information contained herein is believed to be accurate as of the date set forth in the cover. No representation or warranty is made as to its continued accuracy after such date. All information contained herein is subject to revision at any time in the sole discretion of REQ. REQ does not have any duty or obligation to update the information set forth herein. This confidential due diligence questionnaire includes forward-looking statements that represent REQ's opinions, expectations, beliefs, intentions, estimates or strategies regarding the future, which may not be realized. These statements may be identified by the use of words like "anticipate," "believe," "estimate," "expect," "intend," "may," "plan," "will," "should," "seek," "think," and similar expressions. The forward-looking statements reflect our views and assumptions with respect to future events as of the date of this confidential due diligence questionnaire and are subject to risks and uncertainties. Such risks and uncertainties include, but are not limited to, loss of capital, limited liquidity and lack of investment history. Actual and future results and trends could differ materially from those described by such statements due to various factors, including those beyond our ability to control or predict. Given these uncertainties, you should not place undue reliance on the forward-looking statements.

This document is not intended for distribution to, or use by, any person or entity in any jurisdiction or country where such distribution or use would be contrary to local law or regulation.



**REQ CAPITAL**

INVESTING WITH INSIGHT



**REQ CAPITAL**  
INVESTING WITH INSIGHT